

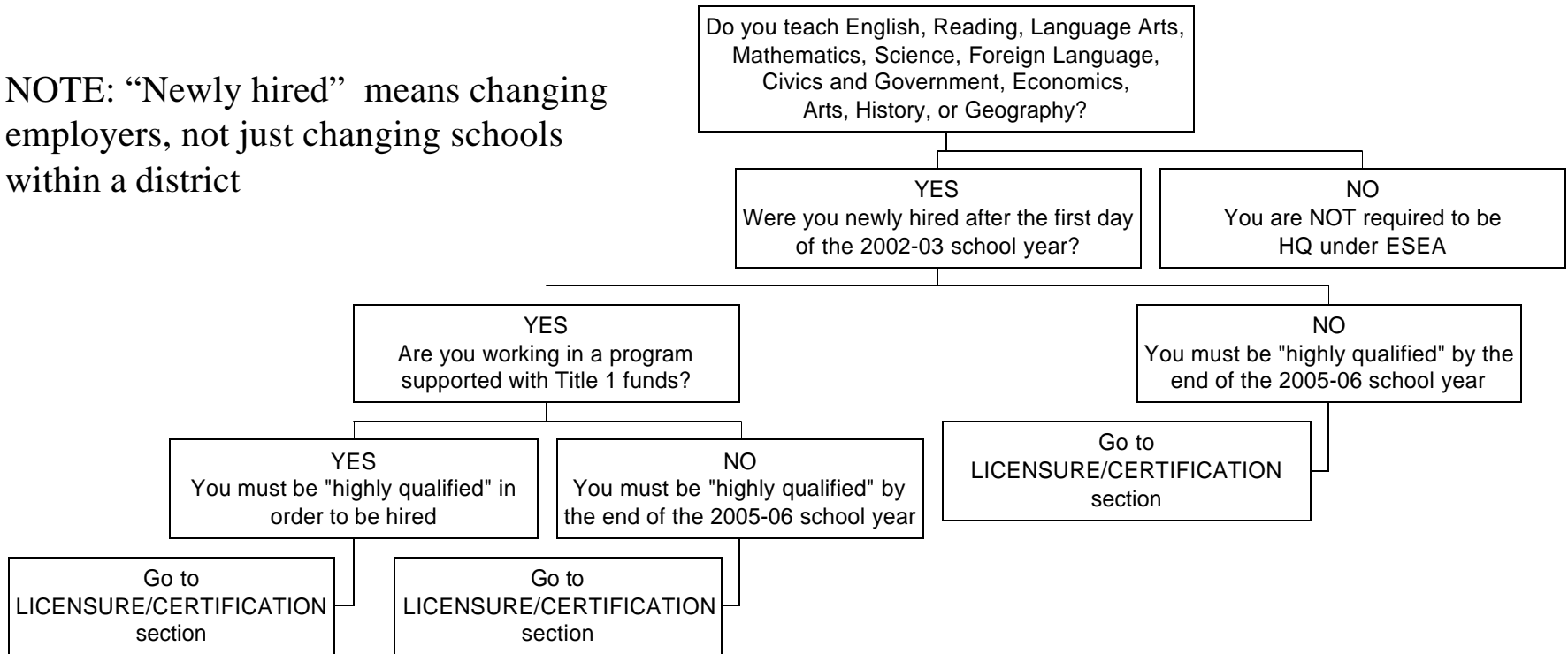
“Highly Qualified” Teacher

(as of December 1, 2002)

Follow the chart(s) until you reach: You are “highly qualified”

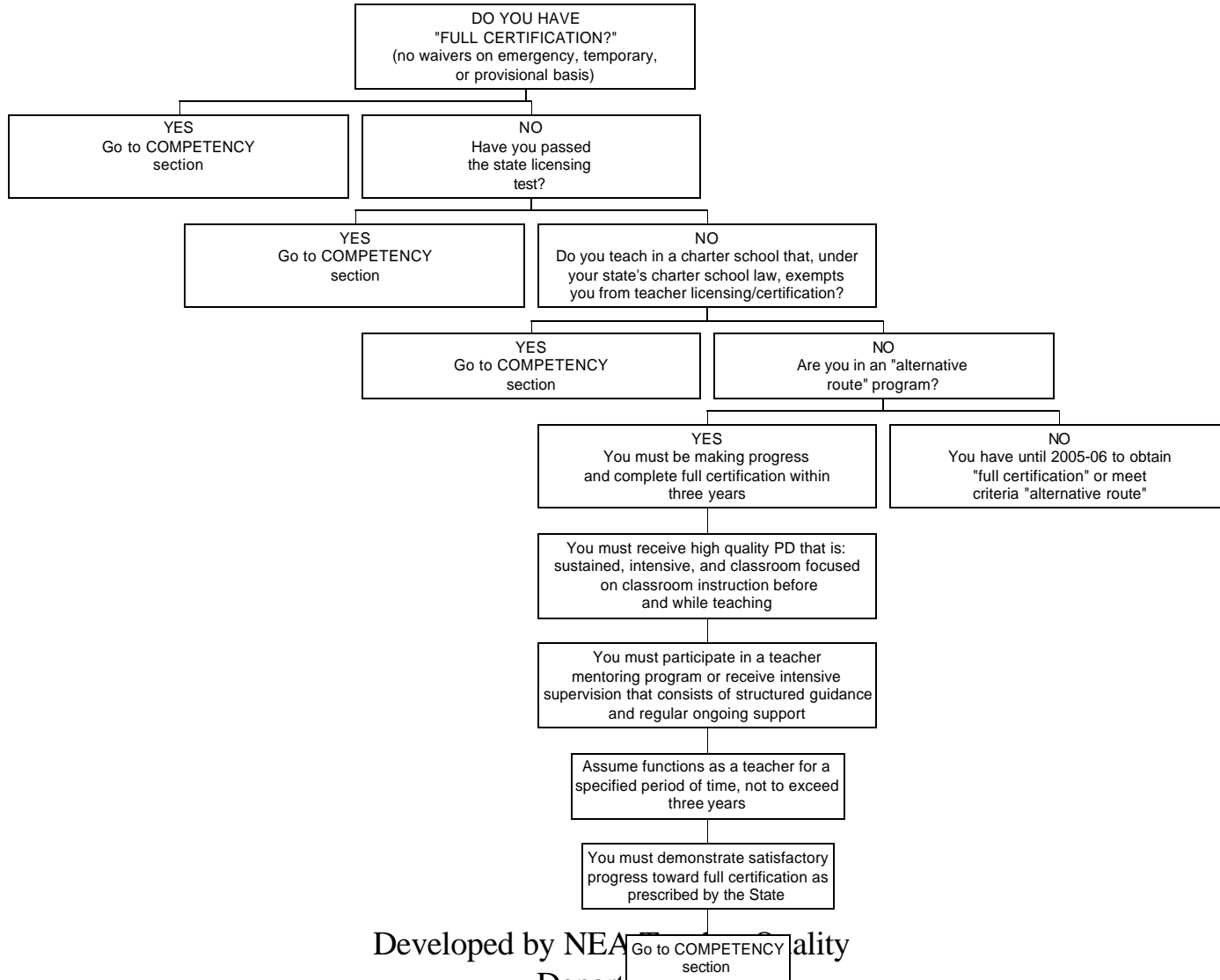
Timelines Section

NOTE: “Newly hired” means changing employers, not just changing schools within a district

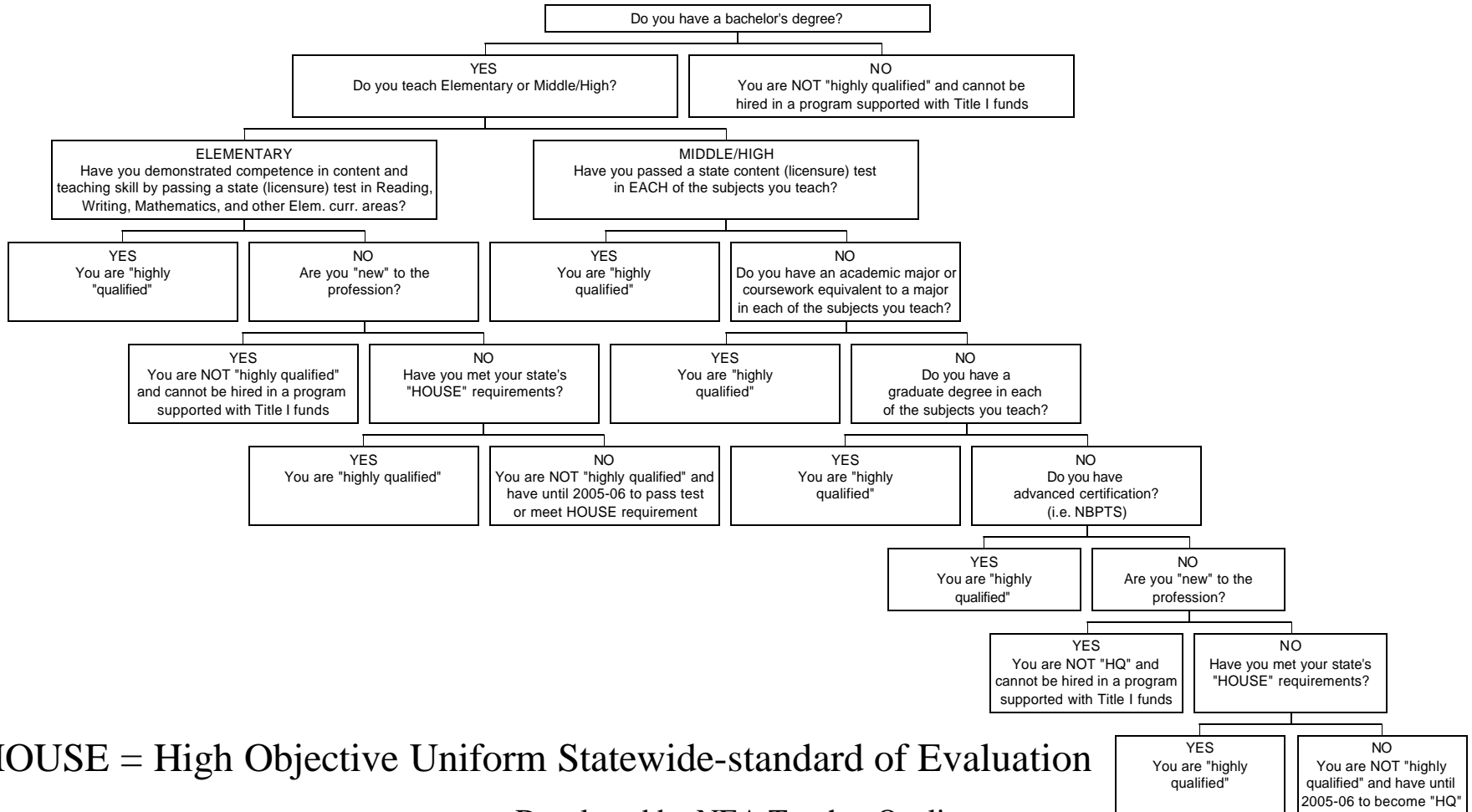


Developed by NEA Teacher Quality
Department

Licensure/Certification Section



Competency Section



*HOUSE = High Objective Uniform Statewide-standard of Evaluation

Developed by NEA Teacher Quality Department